



# WORKWEAR

## **SAFETY**

No matter the industry, whether you're in Construction, Manufacturing or Hospitality - Altitude Workwear has been designed with a primary focus on safety.

## **DURABILITY**

Technological advancements in the manufacturing process, have allowed us to select the right technical fabrics for all our garments – ensuring improved functionality, performance and durability.

## **RELIABILITY**

Finding and investing in the right Workwear solution is essential for any industry, not only to provide your staff with dependable everyday gear to get the job done, but to save costs in the long run. Altitude Workwear has been designed with reliability in mind.

# CONTENTS

<b>Conti Suits</b>	6 - 23
<b>Work Jackets &amp; Pants</b>	24 - 47
<b>Footwear</b>	48 - 55
<b>Hi-Viz</b>	56 - 73
<b>Rainwear</b>	74 - 79
<b>Warmwear</b>	80 - 109
<b>Hospitality</b>	110 - 127
<b>Tops</b>	128 - 143
<b>Bottoms</b>	144 - 155
<b>Headwear</b>	156 - 160





## COLOUR ABBREVIATIONS

AQ	Aqua
BL	Black
BN	Brown
BU	Blue
C	Charcoal
CAM	Camouflage
CY	Cyan
DB	Dark Blue
DG1	Dark Green
DG2	Dark Grey
DR	Dark Red
G	Green
GY	Grey
KH	Khaki
L	Lime
LB	Light Blue
MG	Military Green
N	Navy
NT	Natural
O	Orange
OL	Olive
P	Purple
PI	Pink
R	Red
RB	Royal Blue
SB	Sky Blue
ST	Stone
STMG	Stone / Military Green
SW / W	White
TQ	Turquoise
Y	Yellow

# BRANDING OPTIONS

Once you've found the right Workwear solution, it's time to put your mark on it. Branding your Workwear with your company logo is a fantastic way to build brand awareness and will assist you in creating clear identification and meeting compliance requirements on any site you visit.

### EMBROIDERY

Embroidery is the art of decorating fabric with designs stitched in strands of thread. Embroidery machines are driven by computers that read digitised Embroidery files created by special software.

### SCREEN PRINTING

Screen Printing is the process whereby a logo is transferred onto a garment via a mesh screen. This method provides excellent coverage and is especially good for large and bold logos. Colours are printed one at a time so accurate registration is essential.

### DIGITAL TRANSFER ON CLOTHING

Digital Transfer on Clothing is a process by which a digital image is printed onto specialised transfer paper. The transfer is then applied to the garment using a heat press process. Specialised digital printing machines use liquid ink instead of toner ink to ensure long-lasting flexibility and durability of your logo.

## DISCLAIMERS & INFORMATION

Colours of actual products may vary slightly from the printed colours shown. Please request a sample for accurate colour-checking purposes.

All product sizes have been indicated in centimetres. Sizes may vary slightly from those provided.

Product images may vary slightly from actual products due to inherent limitations in photography, film separation and printing.

We have endeavoured to ensure that the details provided in the catalogue are accurate, however, due to the volume of information, mistakes might have crept in. Should you have questions or uncertainties regarding information or products in the catalogue, please liaise with your Account Manager or view a sample for confirmation prior to placing your order. We cannot be held responsible for any mistakes made or costs incurred based on incorrect information displayed in this catalogue.

The artwork, designs and trademarks imprinted on the products displayed herein are reproduced only as examples of the type and quality of branded products available. They are not intended to represent that the products are either endorsed by or produced for the owners of the artwork, design or trademark. E&OE.

# FEATURE ICON REFERENCE



## 100% Cotton

Extremely durable & comfortable. This natural fabric is hypoallergenic & breathable.



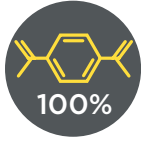
## Day / Night Visibility

A combination of high visibility fabrics that are effective in low light conditions during the day & at night.



## Rainproof

Treated to repel & resist the penetration of water, even in the toughest wet weather conditions.



## 100% Polyester

Extremely durable & crease resistant. It's colourfast, quick drying & stain resistant. Easy to clean & maintain.



## Reflective

Premium quality reflective tape is applied for increased visibility in high-risk environments, at night & in poor light conditions.



## Waterproof

Fabric has been treated to resist the penetration of water.



## Polycotton

A low maintenance blend that is breathable, crease resistant & colourfast. It's less prone to piling & shrinking.



## Heat Resistant 90°C

Offers protective thermal insulation in environments with temperatures as high as 90°C.



## Water Resistant

Fabric has been treated to repel & resist the penetration of water, however, is not 100% waterproof.



## Acid Resistant & Flame Retardant

A chemically treated fabric that resists the corrosive effects of acids & alkalis, with the addition of flame retardants for protection against fire hazards.



## Temperature -5°C

Offers protective thermal insulation in environments with temperatures as low as -5°C.



## Windproof

Manufactured using a tightly woven fabric designed for insulation, warmth & comfort.



## Acid Resistant

A chemically treated fabric that resists the corrosive effects of acids & alkalis in high-risk working environments.



## Temperature -15°C

Offers protective thermal insulation in environments with temperatures as low as -15°C.



## UV Protection

Manufactured with fabric rated for its high level of ultraviolet protection.



## Flame Retardant

Chemically treated with flame retardants for protection against fire hazards.



## Locally Manufactured

Proudly manufactured in South Africa.



## Taped Seams

Seams have been taped & heat sealed to enhance water-resistant properties.



## Breathable

Allows air to pass through easily. Aids in moisture management, reduces sweat & keeps you cool.



## Manufactured in the SADC Region

Manufactured in the Southern African Development Community (SADC). Increasing economic development & growth in 16 countries in SA.



## Triple Stitched

Triple stitched at the seams for improved strength & durability.



## Easy Care

Ideal for everyday wear. Requires low maintenance & is easy to clean & crease resistant.



## Oil Resistant

Treated to resist the corrosive effects caused by oil & other oil-based agents.



## Vented

Vented panels allow air to easily flow through the garment. Keeps you cool in high temperature environments.



## CE Certified

Manufactured in compliance with health, safety & environmental protection standards.



## Slip Resistant

Designed with slip resistant properties. Tested & approved to meet the highest quality standards for safety, comfort & reliability.



## YKK Zipper

World renowned for its reliability & durability.



## NRCS Approved

Approved by the National Regulator For Compulsory Specifications.



## Steel Toe Cap

Reinforced with a steel toe cap, offering additional protection against foot related injuries in the workplace.



## Zip-Off Sleeves

A 2-in-1 garment with a design that features convenient zip-off sleeves.



## SABS Approved

Meets the highest standards for quality, safety & reliability.



## Women

Fit and style has been tailored for women.



## Denim

Denim is a heavy-duty fabric that is made to last, crease resistant and easy to maintain. Denim is comfortable and breathable, providing you with protection against the elements year-round.



# CONTI SUITS

Durable everyday Workwear, providing the performance and protection you need. Our Conti Suits are built to last.



CONTI SUITS





## CONTRACT POLYCOTTON CONTI SUIT

SPLT-1101

**Weight** 190g/m<sup>2</sup>

**Fabric** polycotton twill

**Description** **jacket:** open neck collar • front yoke panel • concealed zip • monza style chest pocket • two side pockets  
**pants:** elasticated back waist • five belt loops • two slanted front pockets • back pocket

**Colours** BL G GY KH N O R RB W

**Branding** Embroidery, Screen Print

the suit size is based on the size of the jacket

### SIZE

<b>J*</b>	32	34	36	38	40	42	44	46	48	50	52	54	56	58
<b>P**</b>	28	30	32	34	36	38	40	42	44	46	48	50	52	54

### MEASUREMENTS

<b>J*</b>	46,5	49	51,5	54	56,5	59	61,5	64	66,5	69	71,5	74	76,5	79
<b>P**</b>	36,8	39,1	41,4	43,7	46	48,3	50,6	52,9	55,2	57,5	59,8	62,1	64,5	66,7

\* JACKET HALF CHEST (CM) \*\* MATCHING PANTS HALF WAIST STRETCHED (CM)





CONTI SUITS



## CONTRACT POLYCOTTON

### REFLECTIVE CONTI SUIT

Weight 190g/m<sup>2</sup>

Fabric polycotton twill

Description **jacket:** open neck collar • front yoke panel • concealed zip • monza style chest pocket • two side pockets  
**pants:** elasticated back waist • five belt loops • two slanted front pockets • back pocket

Colours **BL** **G** **GY** **KH** **N** **O** **R** **RB** **W**

Branding Embroidery, Screen Print

the suit size is based on the size of the jacket

#### SIZE

<b>J*</b>	32	34	36	38	40	42	44	46	48	50	52	54	56	58
<b>P**</b>	28	30	32	34	36	38	40	42	44	46	48	50	52	54

#### MEASUREMENTS

<b>J*</b>	46,5	49	51,5	54	56,5	59	61,5	64	66,5	69	71,5	74	76,5	79
<b>P**</b>	36,8	39,1	41,4	43,7	46	48,3	50,6	52,9	55,2	57,5	59,8	62,1	64,5	66,7

\* JACKET HALF CHEST (CM) \*\* MATCHING PANTS HALF WAIST STRETCHED (CM)

### REFLECTIVE ARMS & LEGS - YELLOW TAPE

yellow/silver 50mm reflective tape detail on arms and legs

#### PRE-TAPED AND IN STOCK\*

SPLT-11010-BL SPLT-11010-G SPLT-11010-GY SPLT-11010-KH SPLT-11010-O SPLT-11010-R SPLT-11010-W

SPLT-11005-N SPLT-11005-RB



### REFLECTIVE ARMS & LEGS - ORANGE TAPE

orange/silver 50mm reflective tape detail on arms and legs

SPLT-11011-BL SPLT-11011-G SPLT-11011-GY SPLT-11011-KH SPLT-11011-N SPLT-11011-O SPLT-11011-R SPLT-11011-RB SPLT-11011-W



\*Navy and royal blue Conti Suits with yellow/silver 50mm reflective tape on arms and legs in this style are available immediately, ie with no lead times associated (unless branded).

Reflective tape is added to all other relevant styles in the Workwear range upon placing an order and therefore will have an associated lead time.





## CONTRACT POLYCOTTON



## REFLECTIVE CONTI SUIT

Weight 190g/m<sup>2</sup>

Fabric polycotton twill

Description **jacket:** open neck collar • front yoke panel • concealed zip • monza style chest pocket • two side pockets  
**pants:** elasticated back waist • five belt loops  
• two slanted front pockets • back pocket

Colours **BL** **G** **GY** **KH** **N** **O** **R** **RB** **W**

Branding Embroidery, Screen Print

the suit size is based on the size of the jacket

### SIZE

J*	32	34	36	38	40	42	44	46	48	50	52	54	56	58
P**	28	30	32	34	36	38	40	42	44	46	48	50	52	54

### MEASUREMENTS

J*	46,5	49	51,5	54	56,5	59	61,5	64	66,5	69	71,5	74	76,5	79
P**	36,8	39,1	41,4	43,7	46	48,3	50,6	52,9	55,2	57,5	59,8	62,1	64,5	66,7

\* JACKET HALF CHEST (CM) \*\* MATCHING PANTS HALF WAIST STRETCHED (CM)

## REFLECTIVE ARMS, LEGS & BACK - YELLOW TAPE

yellow/silver 50mm reflective tape detail on arms, legs and back

SPLT-11012-BL SPLT-11012-G SPLT-11012-GY SPLT-11012-KH SPLT-11012-N SPLT-11012-O SPLT-11012-R SPLT-11012-RB SPLT-11012-W



**BL** **G** **GY** **KH** **N** **O** **R** **RB** **W**

## REFLECTIVE ARMS, LEGS & BACK - ORANGE TAPE

orange/silver 50mm reflective tape detail on arms, legs and back

SPLT-11013-BL SPLT-11013-G SPLT-11013-GY SPLT-11013-KH SPLT-11013-N SPLT-11013-O SPLT-11013-R SPLT-11013-RB SPLT-11013-W



**BL** **G** **GY** **KH** **N** **O** **R** **RB** **W**



## TECH 100% COTTON CONTI SUIT

SPLT-1103

**Weight** 200g/m<sup>2</sup>

**Fabric** 100% cotton twill

**Description** **jacket:** open neck collar • front yoke panel • concealed zip • monza style chest pocket • two side pockets • **pants:** elasticated back waist • five belt loops • two slanted front pockets • back pocket

**Colours** N RB

**Branding** Embroidery, Screen Print

the suit size is based on the size of the jacket

### SIZE

<b>J*</b>	32	34	36	38	40	42	44	46	48	50	52	54	56	58
<b>P**</b>	28	30	32	34	36	38	40	42	44	46	48	50	52	54

### MEASUREMENTS

<b>J*</b>	48,5	51	53,5	56	58,5	61	63,5	66	68,5	71	73,5	76	78,5	81
<b>P**</b>	77	82	87	92	97	102	107	112	117	122	127	132	137	142

\* JACKET HALF CHEST (CM) \*\* MATCHING PANTS HALF WAIST STRETCHED (CM)





## TECH 100% COTTON REFLECTIVE CONTI SUIT

Weight	200g/m <sup>2</sup>
Fabric	100% cotton twill
Description	<b>jacket:</b> open neck collar • front yoke panel • concealed zip • monza style chest pocket • two side pockets • <b>pants:</b> elasticated back waist • five belt loops • two slanted front pockets • back pocket
Colours	<b>N</b> <b>RB</b>
Branding	Embroidery, Screen Print

the suit size is based on the size of the jacket

### SIZE

J*	32	34	36	38	40	42	44	46	48	50	52	54	56	58
P**	28	30	32	34	36	38	40	42	44	46	48	50	52	54

### MEASUREMENTS

J*	48,5	51	53,5	56	58,5	61	63,5	66	68,5	71	73,5	76	78,5	81
P**	77	82	87	92	97	102	107	112	117	122	127	132	137	142

\* JACKET HALF CHEST (CM) \*\* MATCHING PANTS HALF WAIST STRETCHED (CM)



## REFLECTIVE ARMS & LEGS

### YELLOW TAPE

yellow/silver 50mm reflective tape detail on arms and legs

SPLT-11031-N    SPLT-11031-RB



### ORANGE TAPE

orange/silver 50mm reflective tape detail on arms and legs

SPLT-11032-N    SPLT-11032-RB



## REFLECTIVE ARMS, LEGS & BACK

### YELLOW TAPE

yellow/silver 50mm reflective tape detail on arms, legs and back

SPLT-11033-N    SPLT-11033-RB



### ORANGE TAPE

orange/silver 50mm reflective tape detail on arms, legs and back

SPLT-11034-N    SPLT-11034-RB





### OLD SCHOOL 100% COTTON DENIM CONTI SUIT

SPLT-1104

**Fabric** 100% cotton, 10oz denim

**Description** **jacket:** open neck collar • front yoke panel • concealed zip • monza style chest pocket • two side pockets • **pants:** elasticated back waist • five belt loops • two slanted front pockets • back pocket

**Colours** **DB**

**Branding** Embroidery, Screen Print

the suit size is based on the size of the jacket

**SIZE**

<b>J*</b>	32	34	36	38	40	42	44	46	49	50	52	54	56	58
<b>P**</b>	28	30	32	34	36	38	40	42	44	46	48	50	52	54

**MEASUREMENTS**

<b>J*</b>	48,5	51	53,5	56	58,5	61	63,5	66	68,5	71	73,5	76	78,5	81
<b>P**</b>	77	82	87	92	97	102	107	112	117	122	127	132	137	142

\* JACKET HALF CHEST (CM) \*\* MATCHING PANTS WAIST STRETCHED (CM)



**OLDSCHOOL 100% COTTON DENIM CONTI SUIT**



**REFLECTIVE ARMS & LEGS**

**YELLOW TAPE**

yellow/silver 50mm reflective tape detail on arms and legs

SPLT-11041-DB

**ORANGE TAPE**

orange/silver 50mm reflective tape detail on arms and legs

SPLT-11042-DB



**REFLECTIVE ARMS, LEGS & BACK**

**YELLOW TAPE**

yellow/silver 50mm reflective tape detail on arms, legs and back

SPLT-11043-DB

**ORANGE TAPE**

orange/silver 50mm reflective tape detail on arms, legs and back

SPLT-11044-DB







**SAFETY POLYCOTTON  
BOILER SUIT**

SPLT-1108

<b>Weight</b>	190g/m <sup>2</sup>
<b>Fabric</b>	polycotton twill
<b>Description</b>	open neck collar • concealed metal shank button placket • left chest pocket • slanted front pockets • back pocket • top stitching detail • bar tacks at stress points
<b>Colours</b>	<input checked="" type="radio"/> RB <input type="radio"/> W
<b>Branding</b>	Embroidery, Screen Print

**JACKET HALF CHEST (CM)**

SIZE	32	34	36	38	40	42	44	46	48	50	52	54
CM	45,4	48	50,5	53	55,5	58	60,5	63	65,5	68	70,5	73



**ACID RESISTANT POLYCOTTON  
CONTI SUIT**

SPLT-1106

<b>Weight</b>	190g/m <sup>2</sup>
<b>Fabric</b>	acid resistant polycotton
<b>Description</b>	<b>jacket:</b> open neck collar • front yoke panel • concealed zip • monza style chest pocket • two side pockets • <b>pants:</b> elasticated back waist • five belt loops • two slanted front pockets • back pocket • triple stitched back rise
<b>Colours</b>	<b>OL</b>
<b>Branding</b>	Embroidery, Screen Print

the suit size is based on the size of the jacket

**SIZE**

<b>J*</b>	32	34	36	38	40	42	44	46	48	50	52	54	56	58
<b>P**</b>	28	30	32	34	36	38	40	42	44	46	48	50	52	54

**MEASUREMENTS**

<b>J*</b>	48,5	51	53,5	56	58,5	61	63,5	66	68,5	71	73,5	76	78,5	81
<b>P**</b>	77	82	87	92	97	102	107	112	117	122	127	132	137	142

\* JACKET HALF CHEST (CM) \*\* MATCHING PANTS WAIST STRETCHED (CM)



**ACID RESISTANT POLYCOTTON CONTI SUIT**



**REFLECTIVE ARMS & LEGS**



**YELLOW TAPE**  
yellow/silver 50mm reflective tape detail on arms and legs



SPLT-11061-OL



**REFLECTIVE ARMS, LEGS & BACK**



**YELLOW TAPE**  
yellow/silver 50mm reflective tape detail on arms, legs and back



SPLT-11063-OL



**ORANGE TAPE**  
orange/silver 50mm reflective tape detail on arms and legs

SPLT-11062-OL



**ORANGE TAPE**  
orange/silver 50mm reflective tape detail on arms, legs and back

SPLT-11064-OL







## D59 FLAME RETARDANT 100% COTTON CONTI SUIT

SPLT-1120

<b>Weight</b>	200g/m <sup>2</sup>
<b>Fabric</b>	100% D59 flame retardant cotton twill
<b>Description</b>	<b>jacket:</b> open neck collar • front yoke panel • concealed zip • monza style chest pocket • two side pockets • <b>pants:</b> elasticated back waist • five belt loops • two slanted front pockets • back pocket
<b>Colours</b>	<b>G</b>
<b>Branding</b>	Embroidery, Screen Print

the suit size is based on the size of the jacket

### SIZE

<b>J*</b>	32	34	36	38	40	42	44	46	48	50	52	54	56	58
<b>P**</b>	28	30	32	34	36	38	40	42	44	46	48	50	52	54

### MEASUREMENTS

<b>J*</b>	48,5	51	53,5	56	58,5	61	63,5	66	68,5	71	73,5	76	78,5	81
<b>P**</b>	77	82	87	92	97	102	107	112	117	122	127	132	137	142

\* JACKET HALF CHEST (CM) \*\* MATCHING PANTS WAIST STRETCHED (CM)



# WORK JACKETS & PANTS

Our premium selection of Work Jackets & Pants has been designed with functionality and everyday durability in mind. Mix and match these garments to create your ideal Workwear solution.





### WORK POLYCOTTON PANTS

Weight	190g/m <sup>2</sup>
Fabric	polycotton twill
Description	elasticated back waist • five belt loops • two slanted front pockets • back pocket
Colours	<b>BL</b> <b>N</b> <b>RB</b>
Branding	n/a

HALF WAIST STRETCHED (CM)	
SIZE	28 30 32 34 36 38 40 42 44 46 48 50 52
CM	36,8 39,1 41,4 43,7 46 48,3 50,6 52,9 55,2 57,5 59,8 62,1 64,5





WORK JACKETS & PANTS

**REFLECTIVE LEGS - YELLOW TAPE**

yellow/silver 50mm reflective tape detail on legs

SPLT-11021-BL

SPLT-11021-N

SPLT-11021-RB



**REFLECTIVE LEGS - ORANGE TAPE**

orange/silver 50mm reflective tape detail on legs

SPLT-11022-BL

SPLT-11022-N

SPLT-11022-RB





### PREMIUM POLYCOTTON JACKET



**Weight** 235g/m<sup>2</sup>



**Fabric** 65% polyester, 35% cotton twill



**Description** open neck collar • front yoke panel • concealed zip • chest pocket features V-flap with press stud closure and pen pocket • two side pockets • triple needle top stitching • bar tacks at stress points

**Branding** Embroidery, Screen Print

HALF CHEST (CM)

SIZE	S	M	L	XL	2XL	3XL	4XL	5XL
CM	52,2	57	61,8	66,6	71,4	77,2	82	86,8

### SOLID COLOUR JACKET

SPLT-1111-N

SPLT-1111-RB



N



RB

### TWO-TONE JACKET

front and back contrast yoke

SPLT-1112-GY

SPLT-1112-KH



GY



KH



## PREMIUM POLYCOTTON PANTS

SPLT-1113

Weight 235g/m<sup>2</sup>

Fabric 65% polyester, 35% cotton twill

Description elasticated back waist • five belt loops • two slanted front pockets  
• back pocket • triple needle top stitching • bar tacks at stress points

Colours N OL RB

Branding n/a

WAIST STRETCHED (CM)

SIZE	28	30	32	34	36	38	40	42	44	46	48	50	52
CM	87	92	97	102	107	112	117	122	127	132	137	142	147





**REFLECTIVE ARMS**

**YELLOW TAPE**

yellow/silver 50mm reflective tape detail on arms

SPLT-11111-N

SPLT-11111-RB



**ORANGE TAPE**

orange/silver 50mm reflective tape detail on arms

SPLT-11112-N

SPLT-11112-RB



**REFLECTIVE ARMS & BACK**

**YELLOW TAPE**

yellow/silver 50mm reflective tape detail on arms and back

SPLT-11113-N

SPLT-11113-RB



**ORANGE TAPE**

orange/silver 50mm reflective tape detail on arms and back

SPLT-11114-N

SPLT-11114-RB



**PREMIUM POLYCOTTON REFLECTIVE JACKET**



**Weight** 235g/m<sup>2</sup>

**Fabric** 65% polyester, 35% cotton twill

**Description** open neck collar • front yoke panel • concealed zip • chest pocket features V-flap with press stud closure and pen pocket • two side pockets • triple needle top stitching • bar tacks at stress points

**Colours** **N** **RB**

**Branding** Embroidery, Screen Print

HALF CHEST (CM)

SIZE	S	M	L	XL	2XL	3XL	4XL	5XL
CM	52,2	57	61,8	66,6	71,4	77,2	82	86,8



**PREMIUM POLYCOTTON  
REFLECTIVE PANTS**

Weight	235g/m <sup>2</sup>
Fabric	65% polyester, 35% cotton twill
Description	elasticated back waist • five belt loops • two slanted front pockets • back pocket • triple needle top stitching • bar tacks at stress points
Colours	<b>N</b> <b>OL</b> <b>RB</b>
Branding	n/a

WAIST STRETCHED (CM)	
SIZE	28 30 32 34 36 38 40 42 44 46 48 50 52
CM	87 92 97 102 107 112 117 122 127 132 137 142 147

**REFLECTIVE LEGS - YELLOW TAPE**  
yellow/silver 50mm reflective tape detail on legs

SPLT-11131-N      SPLT-11131-OL      SPLT-11131-RB



**REFLECTIVE LEGS - ORANGE TAPE**  
orange/silver 50mm reflective tape detail on legs

SPLT-11132-N      SPLT-11132-OL      SPLT-11132-RB



WORK JACKETS & PANTS



**REFLECTIVE ARMS**

**YELLOW TAPE**

yellow/silver 50mm reflective tape detail on arms

SPLT-11121-GY

SPLT-11121-KH



**ORANGE TAPE**

orange/silver 50mm reflective tape detail on arms

SPLT-11122-GY

SPLT-11122-KH



**REFLECTIVE ARMS & BACK**

**YELLOW TAPE**

yellow/silver 50mm reflective tape detail on arms and back

SPLT-11123-GY

SPLT-11123-KH



**ORANGE TAPE**

orange/silver 50mm reflective tape detail on arms and back

SPLT-11124-GY

SPLT-11124-KH



**PREMIUM TWO-TONE POLYCOTTON**

**REFLECTIVE JACKET**

Weight 235g/m<sup>2</sup>

Fabric 65% polyester, 35% cotton twill

Description front and back contrast yoke • open neck collar • front yoke panel  
 • concealed zip • chest pocket features V-flap with press stud closure and pen pocket • two side pockets • triple needle top stitching  
 • bar tacks at stress points

Colours **GY KH**

Branding Embroidery, Screen Print

HALF CHEST (CM)

SIZE	S	M	L	XL	2XL	3XL	4XL	5XL
CM	52,2	57	61,8	66,6	71,4	77,2	82	86,8





## PREMIUM POLYCOTTON REFLECTIVE PANTS

Weight	235g/m <sup>2</sup>
Fabric	65% polyester, 35% cotton twill
Description	elasticated back waist • five belt loops • two slanted front pockets • back pocket • triple needle top stitching • bar tacks at stress points
Colours	<span>N</span> <span>OL</span> <span>RB</span>
Branding	n/a

### WAIST STRETCHED (CM)

SIZE	28	30	32	34	36	38	40	42	44	46	48	50	52
CM	87	92	97	102	107	112	117	122	127	132	137	142	147

## REFLECTIVE LEGS - YELLOW TAPE

yellow/silver 50mm reflective tape detail on legs

SPLT-11131-N      SPLT-11131-OL      SPLT-11131-RB



## REFLECTIVE LEGS - ORANGE TAPE

orange/silver 50mm reflective tape detail on legs

SPLT-11132-N      SPLT-11132-OL      SPLT-11132-RB









PRESS STUD POCKET CLOSURE & PEN POCKET ON ORANGE & YELLOW JACKETS



WORK JACKETS & PANTS

### PREMIUM TWO-TONE HI-VIZ REFLECTIVE JACKET

SPLT-1109



Weight	235g/m <sup>2</sup>
Fabric	65% polyester, 35% cotton twill • <b>contrast panels:</b> 50% cotton, 50% polyester interwoven fabric
Description	front and back contrast panels • open neck collar • front yoke panel • concealed YKK zip with single press stud • chest pocket features V-flap with press stud closure and pen pocket • two front pockets • silver 50mm reflective tape detail • triple needle top stitching • bar tacks at stress points
Colours	 
Branding	Embroidery, Screen Print

#### HALF CHEST (CM)

SIZE	S	M	L	XL	2XL	3XL	4XL	5XL
CM	52,2	57	61,8	66,6	71,4	77,2	82	86,8

### PREMIUM TWO-TONE HI-VIZ REFLECTIVE PANTS

SPLT-1110

Weight	235g/m <sup>2</sup>
Fabric	65% polyester, 35% cotton twill • <b>contrast panels:</b> 50% cotton, 50% polyester interwoven fabric
Description	contrast panels at mid leg • elasticated back waist • five belt loops • concealed YKK zip • two slanted front pockets • back pocket • silver 50mm reflective tape detail • triple needle top stitching • bar tacks at stress points
Colours	 
Branding	n/a

#### WAIST STRETCHED (CM)

SIZE	28	30	32	34	36	38	40	42	44	46	48	50	52
CM	90	95	100	105	110	115	120	125	130	135	140	145	150





## CRAFTSMAN PREMIUM 100% COTTON JACKET

SPLT-1114

Weight 200g/m<sup>2</sup>

Fabric 100% cotton twill

Description open neck collar • front yoke panel • concealed zip  
• chest pocket features V-flap with press stud closure and pen pocket • two side pockets • triple needle top stitching  
• bar tacks at stress points

Colours **N** **RB**

Branding Embroidery, Screen Print

HALF CHEST (CM)

SIZE	S	M	L	XL	2XL	3XL	4XL	5XL
CM	52,2	57	61,8	66,6	71,4	77,2	82	86,8



## CRAFTSMAN PREMIUM 100% COTTON PANTS

SPLT-1115

Weight 200g/m<sup>2</sup>

Fabric 100% cotton twill

Description elasticated back waist • five belt loops • two slanted front pockets • back pocket • triple needle top stitching  
• bar tacks at stress points

Colours **N** **RB**

Branding n/a

WAIST STRETCHED (CM)

SIZE	28	30	32	34	36	38	40	42	44	46	48	50	52
CM	87	92	97	102	107	112	117	122	127	132	137	142	147





**REFLECTIVE ARMS**

**YELLOW TAPE**

yellow/silver 50mm reflective tape detail on arms

SPLT-11141-N

SPLT-11141-RB



**ORANGE TAPE**

orange/silver 50mm reflective tape detail on arms

SPLT-11142-N

SPLT-11142-RB



**REFLECTIVE ARMS & BACK**

**YELLOW TAPE**

yellow/silver 50mm reflective tape detail on arms and back

SPLT-11143-N

SPLT-11143-RB



**ORANGE TAPE**

orange/silver 50mm reflective tape detail on arms and back

SPLT-11144-N

SPLT-11144-RB



**CRAFTSMAN PREMIUM 100% COTTON REFLECTIVE JACKET**



Weight	200g/m <sup>2</sup>
Fabric	100% cotton twill
Description	open neck collar • front yoke panel • concealed zip • chest pocket features V-flap with press stud closure and pen pocket • two side pockets • triple needle top stitching • bar tacks at stress points
Colours	<b>N</b> <b>RB</b>
Branding	Embroidery, Screen Print

HALF CHEST (CM)

SIZE	S	M	L	XL	2XL	3XL	4XL	5XL
CM	52,2	57	61,8	66,6	71,4	77,2	82	86,8



**CRAFTSMAN PREMIUM 100%  
COTTON REFLECTIVE PANTS**

Weight	200g/m <sup>2</sup>
Fabric	100% cotton twill
Description	elasticated back waist • five belt loops • two slanted front pockets • back pocket • triple needle top stitching • bar tacks at stress points
Colours	<b>N</b> <b>RB</b>
Branding	n/a

HALF WAIST STRETCHED (CM)

SIZE	28	30	32	34	36	38	40	42	44	46	48	50	52
CM	87	92	97	102	107	112	117	122	127	132	137	142	147

WORK JACKETS & PANTS

**REFLECTIVE LEGS**

**YELLOW TAPE**

yellow/silver 50mm reflective tape detail on legs

SPLT-11151-N      SPLT-11151-RB



**ORANGE TAPE**

orange/silver 50mm reflective tape detail on legs

SPLT-11152-N      SPLT-11152-RB







PRESS STUD POCKET  
CLOSURE, PEN POCKET &  
CONTRAST STITCHING

## PREMIUM 100% COTTON DENIM JACKET

SPLT-1116

**Fabric** 100% cotton, 12oz denim

**Description** open neck collar • front yoke panel • concealed zip  
• chest pocket features square flap with press stud  
closure and pen pocket • two front pockets • contrast  
triple needle top stitching • bar tacks at stress points

**Colours** BU

**Branding** Embroidery, Screen Print

HALF CHEST (CM)

SIZE	S	M	L	XL	2XL	3XL	4XL	5XL
CM	44	49	54	59	64	69	74	79

## PREMIUM 100% COTTON DENIM PANTS

SPLT-1117

**Fabric** 100% cotton, 12oz denim

**Description** elasticated back waist • five belt loops • two slanted  
front pockets • back pocket • contrast triple needle top  
stitching • bar tacks at stress points

**Colours** BU

**Branding** n/a

HALF WAIST STRETCHED (CM)

SIZE	28	30	32	34	36	38	40	42	44	46	48	50	52
CM	36,8	39,1	41,4	43,7	46	48,3	50,6	52,9	55,2	57,5	59,8	62,1	64,5



WORK JACKETS & PANTS



**PREMIUM 100% COTTON DENIM REFLECTIVE JACKET**

**Fabric** 100% cotton, 12oz denim

**Description** open neck collar • front yoke panel • concealed zip • chest pocket features square flap with press stud closure and pen pocket • two front pockets • contrast triple needle top stitching • bar tacks at stress points

**Colours** BU

**Branding** Embroidery, Screen Print

HALF CHEST (CM)

SIZE	S	M	L	XL	2XL	3XL	4XL	5XL
CM	44	49	54	59	64	69	74	79

**REFLECTIVE ARMS**

**YELLOW TAPE**  
yellow/silver 50mm reflective tape detail on arms

SPLT-11161-BU



**ORANGE TAPE**  
orange/silver 50mm reflective tape detail on arms

SPLT-11162-BU



**REFLECTIVE ARMS & BACK**

**YELLOW TAPE**  
yellow/silver 50mm reflective tape detail on arms and back

SPLT-11163-BU



**ORANGE TAPE**  
orange/silver 50mm reflective tape detail on arms and back

SPLT-11164-BU





**PREMIUM 100% COTTON DENIM  
REFLECTIVE PANTS**

**Fabric** 100% cotton, 12oz denim

**Description** elasticated back waist • five belt loops • two slanted front pockets • back pocket • contrast triple needle top stitching • bar tacks at stress points

**Colours** BU

**Branding** n/a

**HALF WAIST STRETCHED (CM)**

SIZE	28	30	32	34	36	38	40	42	44	46	48	50	52
CM	36,8	39,1	41,4	43,7	46	48,3	50,6	52,9	55,2	57,5	59,8	62,1	64,5

**REFLECTIVE LEGS**

**YELLOW TAPE**

yellow/silver 50mm reflective tape detail on legs

SPLT-11171-BU

**ORANGE TAPE**

orange/silver 50mm reflective tape detail on legs

SPLT-11172-BU





**D59**  
**FLAME RETARDANT**  
**& ACID RESISTANT**  
**SABS APPROVED**





**SABS FLAME RETARDANT & ACID RESISTANT REFLECTIVE JACKET**  
SPLT-1118

**Weight** 300g/m<sup>2</sup>

**Fabric** 100% D59 flame retardant and acid resistant cotton twill

**Description** open neck collar • front yoke panel • concealed zip • chest pocket features V-flap with concealed press stud closure • two front pockets • elasticated cuffs • triple needle top stitching • bar tacks at stress points • silver 50mm flame retardant reflective tape detail • SABS approved

**Colours** N

**Branding** Embroidery, Screen Print

CHEST (CM)

SIZE	32	34	36	38	40	42	44	46	48	50	52	54	56
CM	99	104	109	114	119	124	129	134	139	144	149	154	159



FLAME RETARDANT & ACID RESISTANT LOGO EMBROIDERED ON THE GARMENT



SABS WATERMARK ON THE REVERSE SIDE OF THE FABRIC



WORK JACKETS & PANTS



**SABS FLAME RETARDANT & ACID RESISTANT REFLECTIVE PANTS**  
SPLT-1119

**Weight** 300g/m<sup>2</sup>

**Fabric** 100% D59 flame retardant and acid resistant cotton twill

**Description** elasticated back waist • five belt loops • two slanted front pockets • back pocket • right leg features ruler pocket • silver 50mm flame retardant reflective tape detail • triple needle top stitching • bar tacks at stress points • SABS approved

**Colours** N

**Branding** n/a

HALF WAIST STRETCHED (CM)

SIZE	28	30	32	34	36	38	40	42	44	46	48	50	52	54
CM	75	80	85	90	95	100	105	110	115	120	125	130	135	140



### POLYCOTTON DUSTCOAT

SPLT-1107

Weight 190g/m<sup>2</sup>

Fabric polycotton twill

Description open neck collar • 4 button closure • angled chest pocket • two slanted bottom pockets • back panel features center seam and slit opening at bottom • garment features top stitching detail and bar tacks at stress points

Colours **BL** GY **RB** W

Branding Embroidery, Screen Print

HALF CHEST (CM)

SIZE	S	M	L	XL	2XL	3XL	4XL	5XL
CM	50	55	60	65	70	75	80	85





WORK JACKETS & PANTS

**POLYCOTTON HOUSECOAT**  
SPLT-FHC

<b>Weight</b>	190g/m <sup>2</sup>
<b>Fabric</b>	polycotton twill
<b>Description</b>	open neck collar • 5 button closure • mitered chest pocket • two bottom pockets • bust darts • garment features top stitching and bar tacks at stress points • closed back, longer length garment
<b>Colours</b>	<input checked="" type="radio"/> KH <input type="radio"/> N <input type="radio"/> RB <input type="radio"/> W
<b>Branding</b>	Embroidery, Screen Print

HALF CHEST (CM)

SIZE	S	M	L	XL	2XL	3XL	4XL
CM	51,5	55,5	59,5	63,5	67,5	71,5	75,5



A person wearing blue work pants and black safety boots is walking on a yellow industrial structure. The image is partially obscured by a red semi-transparent overlay containing text.

# FOOTWEAR

Our safety Footwear is made to the highest quality standards, tested and certified – ensuring the ultimate comfort, safety and durability.



EASY PULL-ON  
WEBBED LOOP



### HARDMAN CHELSEA BOOT STEEL TOE CAP

SPLT-1905



**Material** genuine split leather upper • **sole:** dual density PU



**Description** CE EN ISO 20345 approved • steel toe cap with impact protection of 200 joules • easy pull-on webbed loop • elasticated sides • heat resistant to 90 degrees celsius • oil resistant • acid resistant • slip resistant • shock absorption heel • wider fit for added comfort



**Colours** **BL** **BN**



**Branding** n/a

UK SIZE: 3 - 13





FOOTWEAR



## ULTRA SAFETY BOOT STEEL TOE CAP

SPLT-1904

**Material** genuine split leather upper • sole: dual density PU

**Description** CE EN ISO 20345 approved • steel toe cap with impact protection of 200 joules • lightweight and flexible • heat resistant to 90 degrees celsius • oil resistant • acid resistant • slip resistant • shock absorption heel • removable inner soles • wider fit for added comfort

**Colours** **BL**

**Branding** n/a

UK SIZE: 3 - 13



## ULTRA SAFETY SHOE STEEL TOE CAP

SPLT-1903

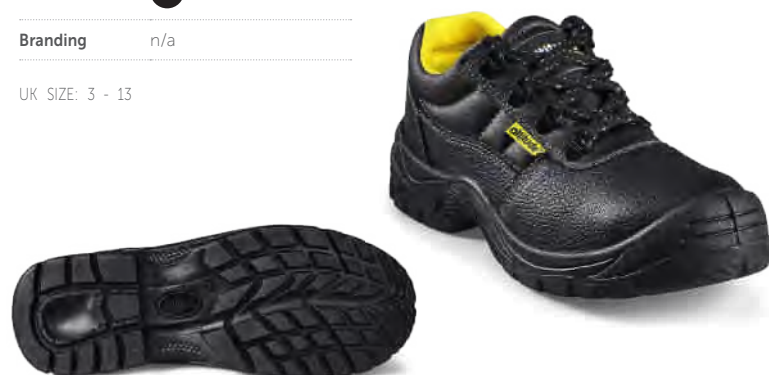
**Material** genuine split leather upper • sole: dual density PU

**Description** CE EN ISO 20345 approved • steel toe cap with impact protection of 200 joules • lightweight and flexible • heat resistant to 90 degrees celsius • oil resistant • acid resistant • slip resistant • shock absorption heel • removable inner soles • wider fit for added comfort

**Colours** **BL**

**Branding** n/a

UK SIZE: 3 - 13





FOOTWEAR

**GUMBOOT NON-STEEL TOE CAP**

SPLT-1901

**Material** PVC

**Description** non-steel toe cap • oil resistant • acid resistant  
• slip resistant • CE Certified

**Colours** **BL**

**Branding** n/a

UK SIZE: 4 - 13

- 
- 
- 
- 
- 





**STRONG MAN  
GUMBOOT STEEL  
TOE CAP**  
SPLT-1902

**Material** PVC

**Description** steel toe cap with impact protection of 200 joules • heat resistant to 90 degrees celsius • oil resistant • acid resistant • slip resistant • CE Certified

**Colours** BL

**Branding** n/a

UK SIZE: 4 - 13



**HYGIENE GUMBOOT NON-STEEL  
TOE CAP**  
SPLT-1900

**Material** PVC / Nitrile combination upper and sole

**Description** non-steel toe cap • slip resistant • blood and fat resistant • acid resistant • CE Certified

**Colours** W

**Branding** n/a

UK SIZE: 4 - 13





## UNISEX CANVAS SNEAKER

SPLT-TRD

**Material** 80% cotton, 20% polyester canvas

**Description** canvas sneaker with rubber sole and toecap  
• twin-needle stitching • cotton laces and lining  
• padded insoles • metallic eyelets

**Colours**  BL  N  R  W

**Branding** Digital Transfer

UK SIZE: 2 - 13



## UNISEX HIGH TOP CANVAS SNEAKER

SPLT-RTR

**Material** 80% cotton, 20% polyester canvas

**Description** high top canvas sneaker with rubber sole and toecap  
• twin-needle stitching • cotton laces and lining • padded insoles • metallic eyelets

**Colours** BL N R W

**Branding** Digital Transfer

UK SIZE: 2 - 13





**SVA**  
ARCHITECTS

A construction site featuring a complex network of metal scaffolding. A worker wearing a high-visibility orange and white vest is partially visible on the left side. The background shows a brick wall and stacks of wooden planks. A dark teal semi-transparent rectangle is overlaid on the center of the image, containing the text.

# HI-VIZ

Keep your team safe with our Hi-Viz range. The range includes a selection of premium reflective Vests, T-Shirts, Jackets and Bottoms to provide the ideal solution for high-risk environments.



### EN4 HI-VIZ REFLECTIVE FULL ZIP VEST



SPLT-1201

**Weight** 120g/m<sup>2</sup>

**Fabric** 100% polyester tricot

**Description** full zip • contrast binding detail • silver 50mm reflective tape detail • ID pouch on left chest • EN4 certified

**Colours** L O PI R RB Y

**Branding** Embroidery, Screen Print



100% POLYESTER TRICOT

CHEST (CM)

SIZE	S	M	L	XL	2XL	3XL	4XL	5XL
CM	107	115,5	124	132,5	141	149	157	165





HI-VIZ



**BASIC HI-VIZ REFLECTIVE BIB**

SPLT-1200



Weight 100g/m<sup>2</sup>



Fabric 100% polyester airtex mesh

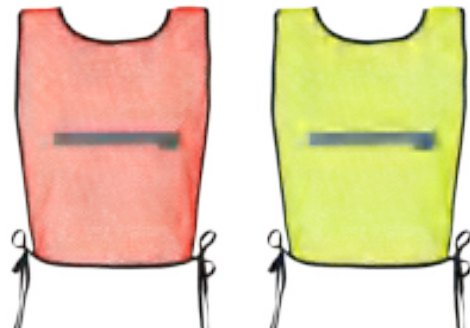


Description contrast binding detail • adjustable ties  
• silver 20mm reflective tape detail

Colours O Y

Branding n/a

Width: 32cm Height: 37cm Length: 92cm





### AERO HI-VIZ REFLECTIVE FULL ZIP VEST

SPLT-1202

**Weight** 120g/m<sup>2</sup>

**Fabric** 100% polyester airtex mesh

**Description** full zip • contrast binding detail • white 50mm PVC prismatic reflective tape detail • ID pouch on left chest

**Colours** 

**Branding** n/a

CHEST (CM)

SIZE	S	M	L	XL	2XL	3XL	4XL	5XL
CM	107	115,5	124	132,5	141	149	157	165



100% POLYESTER AIRTEX MESH



WHITE 50MM PVC PRISMATIC REFLECTIVE TAPE DETAIL



HI-VIZ

ZIP-OFF SLEEVES

**PD TWO-TONE HI-VIZ REFLECTIVE ZIP-OFF JACKET**

SPLT-1703

Weight 150g/m<sup>2</sup>

Fabric 100% polyester tricot with airtex mesh

Description lightweight mixed fabric jacket • zip-off sleeves • contrast full zip  
 • ID pouch on left chest • elasticated cuffs • elasticated waistband with front press stud closure • shoulder epaulettes with press studs  
 • silver 50mm reflective tape detail

Colours 

Branding Embroidery, Screen Print

CHEST (CM)

SIZE	S	M	L	XL	2XL	3XL	4XL	5XL
CM	111,2	118,8	126,5	134,2	141,8	149,5	157	164



MIXED FABRIC



HI-VIZ



### HI-VIZ T-SHIRT

SPLT-1300 Weight

160g/m<sup>2</sup>

**Fabric** 100% polyester birdseye

**Description** short sleeve • self-fabric crew neck

**Colours** L O Y

**Branding** Embroidery, Screen Print

HALF CHEST (CM)

SIZE	S	M	L	XL	2XL	3XL	4XL	5XL
CM	50	53	56	59	62	65	68	71





### SITE HI-VIZ REFLECTIVE T-SHIRT

SPLT-1301

Weight 160g/m<sup>2</sup>

Fabric 100% polyester birdseye

Description short sleeve • self-fabric crew neck • silver 50mm reflective heat-pressed tape detail

Colours L O Y

Branding Embroidery, Screen Print

HALF CHEST (CM)

SIZE	S	M	L	XL	2XL	3XL	4XL	5XL
CM	50	53	56	59	62	65	68	71



PAIR THE HI-VIZ REFLECTIVE T-SHIRT WITH THE BOSS PREMIUM CARGO REFLECTIVE PANTS FOR A COMPLETE LOOK. SEE PAGE 152



HI-VIZ

### HI-VIZ GOLF SHIRT

SPLT-1400

Weight 160g/m<sup>2</sup>

Fabric 100% polyester birdseye

Description knitted collar • three button placket

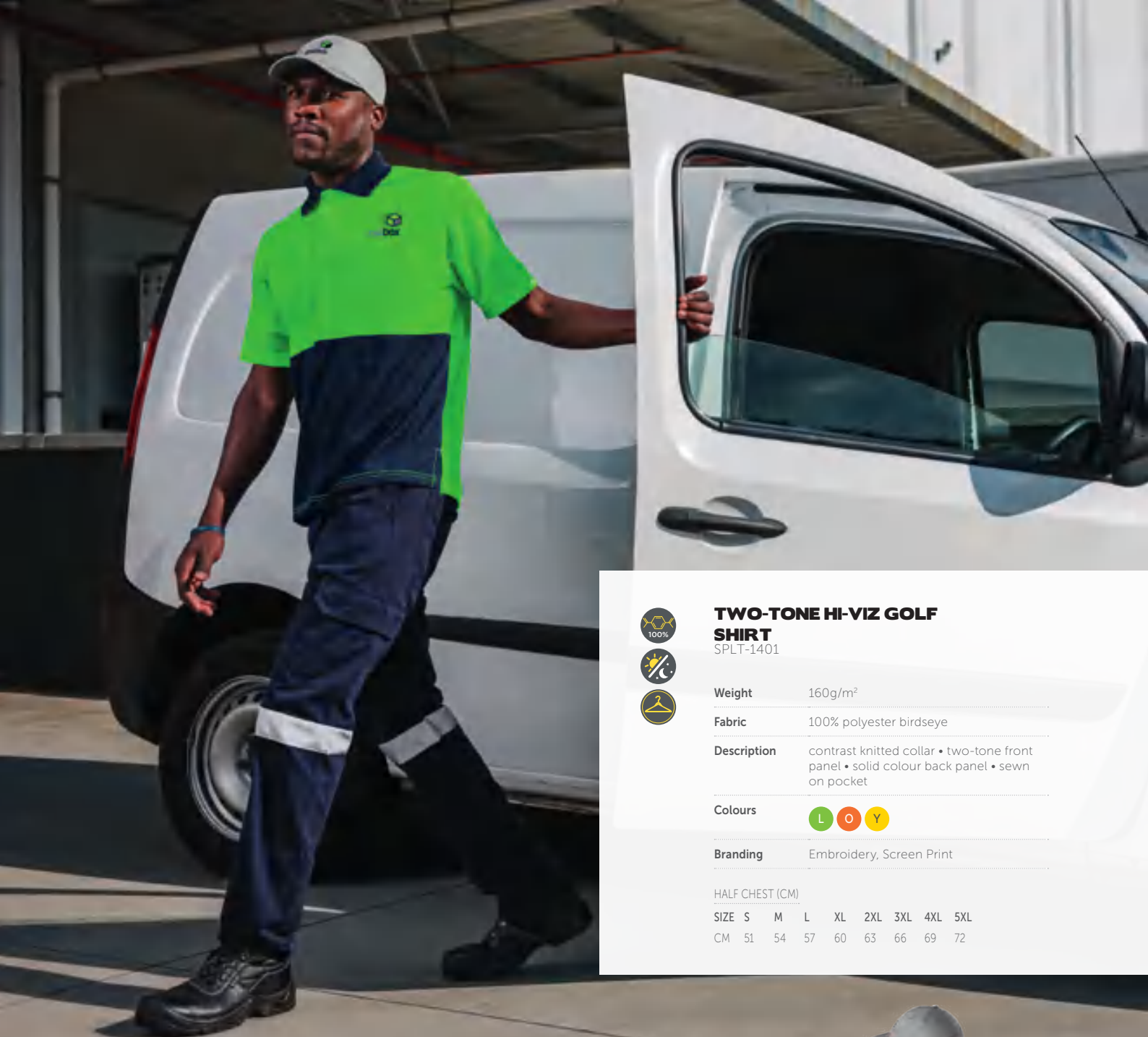
Colours L O Y

Branding Embroidery, Screen Print

HALF CHEST (CM)

SIZE	S	M	L	XL	2XL	3XL	4XL	5XL
CM	51	54	57	60	63	66	69	72





## TWO-TONE HI-VIZ GOLF

### SHIRT SPLT-1401

**Weight** 160g/m<sup>2</sup>

**Fabric** 100% polyester birdseye

**Description** contrast knitted collar • two-tone front panel • solid colour back panel • sewn on pocket

**Colours** L O Y

**Branding** Embroidery, Screen Print

HALF CHEST (CM)

SIZE	S	M	L	XL	2XL	3XL	4XL	5XL
CM	51	54	57	60	63	66	69	72

PAIR THE TWO-TONE HI-VIZ GOLF SHIRT WITH THE BOSS PREMIUM CARGO REFLECTIVE PANTS FOR A COMPLETE LOOK. SEE PAGE 152





**TWO-TONE HI-VIZ  
REFLECTIVE GOLF SHIRT**  
SPLT-1402



**Weight** 160g/m<sup>2</sup>



**Fabric** 100% polyester birdseye



**Description** contrast knitted collar • two-tone front and back panel • silver 50mm reflective tape detail



**Colours** L O Y

**Branding** Embroidery, Screen Print



HALF CHEST (CM)

SIZE	S	M	L	XL	2XL	3XL	4XL	5XL
CM	51	54	57	60	63	66	69	72



HI-VIZ

PAIR THE TWO-TONE HI-VIZ REFLECTIVE GOLF SHIRT WITH THE BOSS PREMIUM CARGO REFLECTIVE PANTS FOR A COMPLETE LOOK. SEE PAGE 152



**VENTED TWO-TONE  
REFLECTIVE WORK SHIRT**  
SPLT-1500

Weight 145g/m<sup>2</sup>

Fabric 100% cotton

Description two chest pockets with flaps • vent under arm  
• garment features back vent below yoke with 3 bar tacks • silver 50mm reflective tape detail  
• double needle top stitching detail

Colours ○ ○

Branding Embroidery, Screen Print

HALF CHEST (CM)

SIZE	S	M	L	XL	2XL	3XL	4XL	5XL
CM	52	57	62	67	72	77	82	87





HI-VIZ

PAIR THE VENTED TWO-TONE REFLECTIVE WORK SHIRT WITH THE BOSS PREMIUM CARGO REFLECTIVE PANTS

### BOSS PREMIUM CARGO REFLECTIVE PANTS

SPLT-1121

Weight 240g/m<sup>2</sup>

Fabric 100% J54 cotton twill

Description YKK zip • self-fabric waist with seven belt loops • cargo pockets with velcro closure flap • side entry front pockets • back pockets with velcro closure flap • back darts • silver 50mm reflective tape detail • top stitching detail • bar tacks at stress points

Colours **N**

Branding n/a

WAIST (CM)

SIZE	28	30	32	34	36	38	40	42	44	46	48	50	52
CM	72	77	82	87	92	97	102	107	112	117	122	127	132



**SIRON**  
fire protection



CONCEALED, FOLDAWAY HOOD WITH VELCRO CLOSURE

## DANGER PADDED TWO-TONE HI-VIZ REFLECTIVE JACKET

SPLT-1701

**Fabric** 100% polyester, 210D Oxford with milky coating, padded and lined in quilted Tafetta

**Description** two-tone jacket with silver 50mm reflective tape detail • concealed zip features storm flap with press stud closure • inner pockets • eyelets under arms • concealed hood with drawcord and toggles • open end sleeve with knitted inner cuff • welt pockets with velcro closure flap • taped seams

**Colours** L O Y

**Branding** Embroidery

CHEST (CM)

SIZE	S	M	L	XL	2XL	3XL	4XL	5XL
CM	118	126	134	142	150	158	166	174



QUILTED TAFETTA LINING AND INNER POCKET



OPEN END SLEEVE

KNITTED INNER SLEEVE CUFF







HI-VIZ

**TECH PADDED HI-VIZ REFLECTIVE BUNNY JACKET**

SPLT-1702

**Fabric** shell: 50% polyester, 50% cotton • inner: 100% polyester polar fleece

**Description** funnel collar • black d-ring tag at upper right front panel • ID pouch on left chest • multi-function sleeve pocket with chunky zip closure • right chest pocket with diagonal chunky zip • utility chest pocket with concealed velcro flap • zip-off sleeves • inner pockets • contrast ribbed cuffs and waistband • slanted welt pockets • silver 50mm reflective tape detail

**Colours** N O Y

**Branding** Embroidery

**HALF CHEST (CM)**

SIZE	S	M	L	XL	2XL	3XL	4XL	5XL
CM	58	62	66	70	74	78	82	86

ZIP-OFF SLEEVES



POLAR FLEECE LINING





lugstein<sup>+</sup>

A man wearing a bright orange rain suit and hood is standing in the rain at night. The background is dark with white raindrops falling. The man is looking towards the camera. The rain suit has reflective strips on the chest and a pocket on the hip.

# RAINWEAR

Our Rainwear is manufactured using premium quality Polyester fabrics, which are extremely durable and built to withstand the toughest wet weather conditions.

WORKWEAR



### THOR RUBBERISED POLYESTER/PVC RAINCOAT

SPLT-1603

**Weight** 180g/m<sup>2</sup>

**Fabric** 70D / 170T 100% polyester, 0,18mm PVC (rubberised)

**Description** concealed hood with drawcord and stoppers • ventilated back with inner mesh cape • concealed zip features double storm flap with press stud closure • eyelets under arms • open end sleeves with inner elasticated cuffs • two front patch pockets with flap • double needle top stitching detail

**Colours**



**Branding** Screen Print

CHEST (CM)

SIZE	S	M	L	XL	2XL	3XL	4XL	5XL
CM	128	132	136	140	144	148	152	156



CARRY POUCH



**ELEMENT RUBBERISED POLYESTER/PVC  
RAINSUIT**  
SPLT-1600

**Weight** 180g/m<sup>2</sup>  
**Fabric** 70D / 170T 100% polyester, 0,18mm PVC (rubberised)

**Description** **jacket:** concealed hood with drawcord and stoppers • ventilated back with inner mesh cape • concealed zip features double storm flap with press stud closure • eyelets under arms • open end sleeves with inner elasticated cuffs • two front solid pockets with flap • drawcord with stoppers at hem • double needle top stitching detail • **pants:** fully elasticated waistband • leg opening features adjustable press studs • double needle top stitching detail

**Colours**  N  OL  Y

**Branding** Screen Print

the suit size is based on the size of the jacket

**SIZE**

<b>J*</b>	S	M	L	XL	2XL	3XL	4XL	5XL
<b>P**</b>	S	M	L	XL	2XL	3XL	4XL	5XL

**MEASUREMENTS**

<b>J*</b>	130	134	138	142	146	150	154	158
<b>P**</b>	112	116	120	124	128	132	136	140

\* JACKET CHEST (CM) \*\* MATCHING PANTS WAIST STRETCHED (CM)



BACK VENT



CARRY POUCH



CARRY POUCH



### OUT HI-VIZ REFLECTIVE RUBBERISED POLYESTER/PVC RAINSUIT

SPLT-1601

Weight 180g/m<sup>2</sup>

Fabric 70D / 170T 100% polyester, 0,18mm PVC (rubberised)

**Description** **jacket:** concealed hood with drawcord and stoppers • ventilated back with inner mesh cape • concealed zip features double storm flap with press stud closure • eyelets under arms • open end sleeves with inner elasticated cuffs • two front solid pockets with flap • drawcord with stoppers at hem • double needle top stitching detail • silver 25mm reflective tape detail  
**pants:** fully elasticated waistband • leg opening features adjustable press studs • double needle top stitching detail • silver 25mm reflective tape detail

Colours L N O Y

Branding Screen Print

the suit size is based on the size of the jacket

SIZE

J*	S	M	L	XL	2XL	3XL	4XL	5XL
P**	S	M	L	XL	2XL	3XL	4XL	5XL

MEASUREMENTS

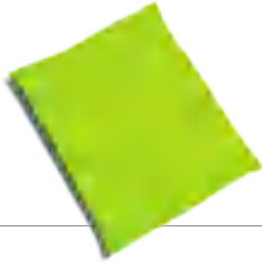
J*	130	134	138	142	146	150	154	158
P**	112	116	120	124	128	132	136	140

\* JACKET CHEST (CM) \*\* MATCHING PANTS WAIST STRETCHED (CM)





CARRY POUCH



RAINWEAR

**RAGE TWO-TONE HI-VIZ REFLECTIVE RUBBERISED POLYESTER/PVC RAINSUIT** SPLT-1602

Weight	180g/m <sup>2</sup>
Fabric	70D / 170T 100% polyester, 0,18mm PVC (rubberised)
Description	<p><b>jacket:</b> two-tone with silver 50mm reflective tape detail • hood with drawcord and stoppers • ventilated back with inner mesh cape • concealed zip features double storm flap with press stud closure • eyelets under arms • open end sleeves with inner elasticated cuffs • two front solid pockets with flap • drawcord with stoppers at hem • double needle top stitching detail • <b>pants:</b> two-tone with silver 50mm reflective tape detail • fully elasticated waistband • leg opening features adjustable press studs • double needle top stitching detail</p>
Colours	<span style="background-color: #90EE90; border-radius: 50%; padding: 2px;">L</span> <span style="background-color: #FF8C00; border-radius: 50%; padding: 2px;">O</span> <span style="background-color: #FFFF00; border-radius: 50%; padding: 2px;">Y</span>
Branding	Screen Print

the suit size is based on the size of the jacket

SIZE		MEASUREMENTS													
J*	S M L XL 2XL 3XL 4XL 5XL	130	134	138	142	146	150	154	158						
P**	S M L XL 2XL 3XL 4XL 5XL	112	116	120	124	128	132	136	140						

\* JACKET CHEST (CM) \*\* MATCHING PANTS WAIST STRETCHED (CM)





# WARMWEAR

When working in environments with a cold climate or extremely low temperatures, it's important to ensure your team has the right gear to keep warm, healthy and stay focused on the job at hand.



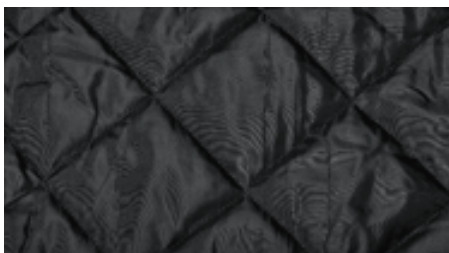
  
DRAGON  
SECURITY



DETACHABLE ZIP-OFF HOOD



SHOULDER EPAULETTES



QUILTED TAFETTA LINING



OPEN END SLEEVE

KNITTED INNER SLEEVE CUFF

## PARKA JACKET

SPLT-1700

**Fabric** 70D / 190T 100% polyester, padded and lined in quilted Tafetta

**Description** detachable hood with drawcord and toggles • concealed zip features storm flap with press stud closure • inner pocket • open end sleeve with knitted inner cuff • two bottom patch pockets with press stud closure flap • jacket features chest patch pocket with press stud closure flap • eyelets under arms • shoulder epaulettes with press studs

**Colours** BL N OL

**Branding** Embroidery

CHEST (CM)

SIZE	S	M	L	XL	2XL	3XL	4XL	5XL
CM	118	126	134	142	150	158	166	174



WARMWEAR





CONCEALED, FOLDAWAY HOOD WITH VELCRO CLOSURE



QUILTED TAFETTA LINING AND INNER POCKET



OPEN END SLEEVE



KNITTED INNER SLEEVE CUFF

WARMWEAR

**DANGER PADDED TWO-TONE HI-VIZ REFLECTIVE JACKET**

SPLT-1701

**Fabric** 100% polyester, 210D Oxford with milky coating, padded and lined in quilted Tafetta

**Description** two-tone jacket with silver 50mm reflective tape detail  
 • concealed zip features storm flap with press stud closure  
 • inner pockets • eyelets under arms • concealed hood with drawcord and toggles  
 • open end sleeve with knitted inner cuff • welt pockets with velcro closure flap  
 • taped seams

**Colours** L O Y

**Branding** Embroidery



CHEST (CM)

SIZE	S	M	L	XL	2XL	3XL	4XL	5XL
CM	118	126	134	142	150	158	166	174





## COOL SINGLE-LINED FREEZER JACKET

SPLT-1800

**Fabric** shell: 105g/m<sup>2</sup>, 100% polyester Oxford • inner: 180g/m<sup>2</sup>, 100% polyester quilted Pongee

**Description** hooded • monza style chest pocket • two monza style bottom pockets • elasticated cuffs • rated to work in environments as low as -5 degrees celsius

**Colours** N

**Branding** Embroidery

HALF CHEST (CM)

SIZE	S	M	L	XL	2XL	3XL	4XL	5XL
CM	62,5	65	67,5	70	72,5	75	77,5	80



ELASTICATED CUFFS →

## COOL SINGLE-LINED FREEZER PANTS

SPLT-1801

**Fabric** shell: 105g/m<sup>2</sup>, 100% polyester Oxford • inner: 180g/m<sup>2</sup>, 100% polyester quilted Pongee

**Description** fully elasticated waistband • rated to work in environments as low as -5 degrees celsius

**Colours** N

**Branding** n/a

HALF WAIST STRETCHED (CM)

SIZE	S	M	L	XL	2XL	3XL	4XL	5XL
CM	48,5	51	53,5	56	58,5	61	63,5	66







## CHILL DOUBLE-LINED FREEZER JACKET

SPLT-1802

**Fabric** shell: 105g/m<sup>2</sup>, 100% polyester Oxford • padding: 250g/m<sup>2</sup>, 100% polyester wadding • lining: 190g/m<sup>2</sup>, 80% polyester 20% cotton twill

**Description** hooded • monza style chest pocket • two monza style bottom pockets • elasticated cuffs • rated to work in environments as low as -15 degrees celsius

**Colours** N

**Branding** Embroidery

HALF CHEST (CM)

SIZE	S	M	L	XL	2XL	3XL	4XL	5XL
CM	65	67,5	70	72,5	75	77,5	80	82,5

ELASTICATED CUFFS →



## CHILL DOUBLE-LINED FREEZER PANTS

SPLT-1803

**Fabric** shell: 105g/m<sup>2</sup>, 100% polyester Oxford • padding: 250g/m<sup>2</sup>, 100% polyester wadding • lining: 190g/m<sup>2</sup>, 80% polyester 20% cotton twill

**Description** fully elasticated waistband • rated to work in environments as low as -15 degrees celsius

**Colours** N

**Branding** n/a

HALF WAIST STRETCHED (CM)

SIZE	S	M	L	XL	2XL	3XL	4XL	5XL
CM	48,5	51	53,5	56	58,5	61	63,5	66





### MENS FLEECE BODYWARMER

SPLT-OSBM

Weight 260g/m<sup>2</sup>

Fabric 100% polyester, bonded micro fleece

Description side welt pockets • full zip • elasticated binding on bottom hem and armhole • optional interchangeable zip pullers (see ALT-ZPU)

Colours **BL** **C** **N** **ST**

Branding Embroidery

HALF CHEST (CM)

SIZE	S	M	L	XL	2XL	3XL	4XL	5XL
CM	52	55	58	61	64	67	70	73

### ZIP PULLER

SPLT-ZPU

optional extra • sold in a set of 3

Colours **L** **O** **R** **SB** **Y**





WARMWEAR

### LADIES FLEECE BODYWARMER

SPLT-OSBL

Weight 260g/m<sup>2</sup>

Fabric 100% polyester, bonded micro fleece

Description side zipped pockets • panel lines for body contouring  
• full zip with chin protector • optional interchangeable zip pullers (see ALT-ZPU)

Colours **BL** **C** **N** **ST**

Branding Embroidery

HALF CHEST (CM)

SIZE	S	M	L	XL	2XL	3XL	4XL
CM	49	52	55	58	61	64	67





WARMWEAR

JUST  
PROPERTY

### MENS BODYWARMER

SPAS-820

**Fabric** 100% peached polyester  
• **lining:** 100% polyester taffeta  
• **padding:** 100% polyester

**Description** padded outer • slanted welt pockets  
• full zip • wind placket • two inner  
pockets with velcro closures

**Colours** BL KH N

**Branding** Digital Transfer, Embroidery

HALF CHEST (CM)

SIZE	S	M	L	XL	2XL	3XL	4XL	5XL
CM	56	59	62	65	68	71	74	77





WARMWEAR

### LADIES BODYWARMER

SPAS-7780

**Fabric** 100% peached polyester  
• **lining:** 100% polyester taffeta  
• **padding:** 100% polyester

**Description** padded outer • slanted welt pockets  
• full zip • wind placket • two inner  
pockets with velcro closures

**Colours** BL KH N

**Branding** Digital Transfer, Embroidery

HALF CHEST (CM)

SIZE	S	M	L	XL	2XL	3XL	4XL
CM	50	53	56	59	62	65	68





WARMWEAR



CURVED BACK HEM

### MENS NORRIS BODYWARMER

SPLT-LND

**Fabric** 100% polyester 40D, 210T lining and polyester wadding

**Description** fully padded quilt • full zip with chin protector  
• welt pockets • curved back hem

**Colours** BL GY N

**Branding** Digital Transfer, Embroidery

HALF CHEST (CM)

SIZE	XS	S	M	L	XL	2XL	3XL	4XL	5XL
CM	46	50	54	58	62	66	70	74	78





WARMWEAR

### LADIES NORRIS BODYWARMER

SPLT-LNL

**Fabric** 100% polyester 40D, 210T lining and polyester wadding

**Description** fully padded quilt • full zip with chin protector  
• welt pockets • curved back hem

**Colours** BL GY N

**Branding** Digital Transfer, Embroidery

HALF CHEST (CM)

SIZE	S	M	L	XL	2XL	3XL	4XL
CM	51	54	57	60	63	66	69







CONCEALED HOOD

### UNISEX ULT-MAC JACKET

SPLT-ATM

**Fabric** 100% oxford nylon outer, 55% cotton, 45% polyester blend towelling

**Description** water resistant • terry towelling inner  
• full zip with metal puller • inner pocket  
• ribbed cuffs • concealed hood • drawcord at hem • welt side pockets

**Colours** BL G N R RB

**Branding** Digital Transfer, Embroidery

HALF CHEST (CM)

SIZE	XS	S	M	L	XL	2XL	3XL	4XL	5XL
CM	57.5	60	62.5	65	67.5	70	72.5	75	77.5

WARMWEAR





### MENS HEAT JACKET

SPLT-CEJ

**Fabric** 100% polyester, 50D PVC with milky coating, lined in micro polar fleece

**Description** water resistant fleece lined jacket • full zip • inner pocket • elasticated cuffs with velcro closure • welt side pockets

**Colours** BL N R RB SB

**Branding** Debossing, Digital Transfer, Embroidery

HALF CHEST (CM)

SIZE	XS	S	M	L	XL	2XL	3XL	4XL	5XL
CM	54	57	60	63	66	69	72	75	78





LINED IN MICRO POLAR FLEECE

### LADIES HEAT JACKET

SPLT-CEJL

**Fabric** 100% polyester, 50D PVC with milky coating, lined in micro polar fleece

**Description** water resistant fleece lined jacket • full zip • inner pocket • elasticated cuffs with velcro closure • welt side pockets

**Colours** BL N R RB SB

**Branding** Debossing, Digital Transfer, Embroidery

HALF CHEST (CM)

SIZE	S	M	L	XL	2XL	3XL	4XL
CM	51	54	57	60	63	66	69

WARMWEAR





WARMWEAR





## MENS ROCKY JACKET

SPLT-COJ

**Fabric** 100% polyester outer, 210T polyester lining, polyester wadding

**Description** lightly padded bomber jacket • elasticated ribbing on hem and cuffs • slanted zipped pockets • trendy top stitching detail

**Colours** **BL** **C** **CAM** **KH** **MG** **N**

**Branding** Digital Transfer, Embroidery

HALF CHEST (CM)

SIZE	XS	S	M	L	XL	2XL	3XL	4XL	5XL
CM	50	54	58	62	66	70	74	78	82

## LADIES ROCKY JACKET

SPLT-COJL

**Fabric** 100% polyester outer, 210T polyester lining, polyester wadding

**Description** lightly padded bomber jacket • elasticated ribbing on hem and cuffs • slanted zipped pockets • trendy top stitching detail

**Colours** **BL** **C** **CAM** **KH** **MG** **N**

**Branding** Digital Transfer, Embroidery

HALF CHEST (CM)

SIZE	S	M	L	XL	2XL	3XL	4XL
CM	51	54	57	60	63	66	69



WARMWEAR





## MENS OLIVER SOFTSHELL JACKET

SPAS-1007

Weight 280g/m<sup>2</sup>

Fabric 100% polyester interlock fabric bonded with 100% polyester mesh • windproof 3000, moisture vapour proof 800

Description zip pockets • full zip • wind placket • reflective vertical piping on front and back panels • adjustable hem toggles • adjustable velcro cuffs • adjustable collar toggle

Colours **BL** **BU** **N** **R**

Branding Debossing, Digital Transfer, Embroidery, Laser Etching

HALF CHEST (CM)

SIZE	S	M	L	XL	2XL	3XL	4XL	5XL
CM	54	57	60	63	66	70	73	76



WARMWEAR

**LADIES OLIVER SOFTSHELL JACKET**

SPAS-1008

**Weight** 280g/m<sup>2</sup>

**Fabric** 100% polyester interlock fabric bonded with 100% polyester mesh • windproof 3000, moisture vapour proof 800

**Description** zip pockets • full zip • wind placket • reflective vertical piping on front and back panels • adjustable hem toggles • adjustable velcro cuffs • adjustable collar toggle

**Colours** BL BU N R

**Branding** Debossing, Digital Transfer, Embroidery, Laser Etching

HALF CHEST (CM)

SIZE	S	M	L	XL	2XL	3XL	4XL
CM	49	52	55	58	61	65	68





WARMWEAR



### MENS LEWIS JACKET

SPLT-HMM

**Fabric** 100% polyester with PVC coating, polar fleece lining, polyester wadding

**Description** fully padded jacket with hood • elasticated cuffs • inner chest pocket • welt pockets

**Colours** BL KH N

**Branding** Digital Transfer, Embroidery

HALF CHEST (CM)

SIZE	S	M	L	XL	2XL	3XL	4XL	5XL
CM	55	58	61	64	67	70	73	76





## LADIES LEWIS JACKET

SPLT-HML

**Fabric** 100% polyester with PVC coating, polar fleece lining, polyester wadding

**Description** fully padded jacket with hood • elasticated cuffs  
• inner chest pocket • welt pockets

**Colours** BL KH N

**Branding** Digital Transfer, Embroidery

HALF CHEST (CM)

SIZE	S	M	L	XL	2XL	3XL	4XL
CM	53	56	59	62	65	68	71





WARMWEAR



### MENS WEGO JACKET

SPAS-7782

**Fabric** 100% peached polyester • **lining:** 100% polyester taffeta • **padding:** 100% polyester

**Description** padded outer • slanted welt pockets • full zip • wind placket

**Colours** BL KH N

**Branding** Digital Transfer, Embroidery

HALF CHEST (CM)

SIZE	S	M	L	XL	2XL	3XL	4XL	5XL
CM	57	60	63	66	69	72	75	78





# PADDED FOR EXTRA WARMTH ON A CHILLY DAY

WARMWEAR

## LADIES WEGO JACKET

SPAS-7783

**Fabric** 100% peached polyester • **lining:** 100% polyester taffeta • **padding:** 100% polyester

**Description** padded outer • slanted welt pockets • full zip • wind placket

**Colours** BL KH N

**Branding** Digital Transfer, Embroidery

HALF CHEST (CM)

SIZE	S	M	L	XL	2XL	3XL	4XL
CM	50.5	53.5	56.5	59.5	62.5	65.5	68.5





TRENDY ZIP POCKET DETAIL ON SLEEVE





WARMWEAR

### MENS MOVER JACKET

SPLT-ROV

**Fabric** 65% polyester, 35% cotton mini twill, 210T lining and polyester wadding

**Description** lightly padded jacket • ribbed inner collar, hem and cuffs • slanted zip pockets • antique metal zips • top stitching detail • sleeve features trendy zip pocket detail

**Colours** BL KH N

**Branding** Digital Transfer, Embroidery, Screen Print

HALF CHEST (CM)

SIZE	S	M	L	XL	2XL	3XL	4XL	5XL
CM	54	58	62	66	70	74	78	82



A photograph of a kitchen environment. The background is a wall of light-colored, square tiles. In the foreground, a gas stove is visible with a black pan on one of the burners. The pan is filled with a bright orange and yellow flame, suggesting cooking or a demonstration. The lighting is dramatic, with the fire providing a strong light source. A dark purple semi-transparent rectangular box is overlaid on the middle of the image, containing the text.

# HOSPITALITY

Our sizzling Hospitality range caters for the most discerning tastes - ideal for Restaurants, Hotels, Bakeries, Canteens, Butcheries, Game Lodges and so much more.



### HYPE WAITERS

#### APRON

SPLT-WAP

Weight 200g/m<sup>2</sup>

Fabric polycotton twill

Description half apron • front patch pocket  
• herringbone tape back ties

Colours **BL** **W**

Branding Digital Transfer, Embroidery,  
Screen Print

Width: 67cm Length: 38cm





HOSPITALITY

### STYLE WAITERS APRON

SPLT-CRW

Weight 6oz

Fabric 100% cotton

Description classic waiters apron • double front pockets secured with metal rivets

Colours **DB**

Branding Digital Transfer, Embroidery, Screen Print

Width: 78.5cm Length: 41cm



### HYPE BIB APRON

SPLT-PBA

Weight 200g/m<sup>2</sup>

Fabric polycotton twill

Description front patch pocket • back ties

Colours BL G N O R RB W

Branding Digital Transfer, Embroidery, Screen Print

Chest: 25cm Width: 67cm Length: 85cm





HOSPITALITY

### SAFE APRON

SPAS-2106

Weight

210g/m<sup>2</sup>

Fabric

polycotton twill

Description

double front pocket • back ties

Colours



Branding

Digital Transfer, Embroidery, Screen Print

Chest: 28cm Width: 69cm Length: 97cm





HOSPITALITY



### STYLE BIB APRON

SPLT-CRB

Weight 6oz

Fabric 100% cotton

Description neck straps through metal eyelets  
• chest pocket • side pocket

Colours **DB**

Branding Digital Transfer, Embroidery,  
Screen Print

Chest: 30cm Width: 70cm Length: 87cm



## BUTCHERS APRON

SPLT-BLG

Weight 240g/m<sup>2</sup>

Fabric 100% cotton

Description classic butchers bib apron • adjustable neck strap • contrast back ties

Colours **N** **R**

Branding Digital Transfer, Embroidery, Screen Print

Chest: 30cm Width: 70cm Length: 87cm



HOSPITALITY

### UNISEX SHORT SLEEVE CHEF JACKET

SPLT-ZSS

Weight 195g/m<sup>2</sup>  
Fabric 65% polyester, 35% cotton twill

Description double breasted with press studs • thermometer sleeve pocket

Colours **BL** W

Branding Digital Transfer, Embroidery, Screen Print

HALF CHEST (CM)

SIZE	XS	S	M	L	XL	2XL	3XL	4XL	5XL
CM	47	52	57	62	67	72	77	82	87

### UNISEX CHEF PANTS

SPLT-GOR

Weight 195g/m<sup>2</sup>

Fabric 65% polyester, 35% cotton twill

Description elasticated waistband with drawcord and stopper • two side pockets • single back pocket

Colours **BL**

Branding n/a

HALF WAIST (CM)

SIZE	XS	S	M	L	XL	2XL	3XL	4XL	5XL
CM	56	61	71	79	84	89	94	99	104



## UNISEX LONG SLEEVE CHEF JACKET



SPLT-ZSL



**Weight** 195g/m<sup>2</sup>

**Fabric** 65% polyester, 35% cotton twill

**Description** double breasted with press studs • thermometer sleeve pocket

**Colours**  BL  W

**Branding** Digital Transfer, Embroidery, Screen Print

HALF CHEST (CM)

SIZE	XS	S	M	L	XL	2XL	3XL	4XL	5XL
CM	47	52	57	62	67	72	77	82	87



**CREATED  
FOR THE  
CULINARY  
CONNOISSEUR**





DOUBLE BREASTED WITH CONTRAST COLOUR COLLAR



CONTRAST INNER CUFF



THERMOMETER SLEEVE POCKET



HOSPITALITY

## UNISEX LONG SLEEVE TOULOUSE CHEF JACKET

SPLT-TLN

**Weight** 195g/m<sup>2</sup>

**Fabric** 65% polyester, 35% cotton

**Description** contrast collar and inner cuff • double breasted • chest pocket • thermometer sleeve pocket

**Colours** W

**Branding** Digital Transfer, Embroidery, Screen Print

HALF CHEST (CM)

SIZE	XS	S	M	L	XL	2XL	3XL	4XL	5XL
CM	53	56	59	62	65	68	71	74	77



# FIT FOR AN EXECUTIVE CHEF

HOSPITALITY



## UNISEX LONG SLEEVE BORDEAUX CHEF JACKET

SPLT-DIJ

Weight 195g/m<sup>2</sup>

Fabric 65% polyester, 35% cotton

Description contrast piping at collar, front panel and cuff • double breasted • thermometer sleeve pocket

Colours W

Branding Digital Transfer, Embroidery, Screen Print

HALF CHEST (CM)

SIZE	XS	S	M	L	XL	2XL	3XL	4XL	5XL
CM	53	56	59	62	65	68	71	74	77



DOUBLE BREASTED WITH CONTRAST PIPING AT COLLAR & FRONT PANEL



CONTRAST PIPING AT CUFF



THERMOMETER SLEEVE POCKET







HOSPITALITY

### UNISEX SHORT SLEEVE UTILITY TOP

SPLT-CNS

Weight 195g/m<sup>2</sup>

Fabric 65% polyester, 35% cotton

Description double breasted front panel with two press studs  
• thermometer sleeve pocket

Colours  BL  W

Branding Digital Transfer, Embroidery, Screen Print

HALF CHEST (CM)

SIZE	XS	S	M	L	XL	2XL	3XL	4XL	5XL
CM	53	56	59	62	65	68	71	74	77



### CHEF BEANIE

SPLT-AVL

Weight 195g/m<sup>2</sup>

Fabric 65% polyester, 35% cotton

Description expandable elastic back

Colours **BL** **W**

Branding Digital Transfer, Embroidery, Screen Print



EXPANDABLE ELASTIC BACK ON BOTH BLACK AND WHITE BEANIE



### BANDANA

SPLT-NMD

Weight 195g/m<sup>2</sup>

Fabric 65% polyester, 35% cotton

Description paneled head wrap • back ties

Colours **BL** **W**

Branding Digital Transfer, Embroidery, Screen Print



## POLYCOTTON HOUSECOAT

SPLT-FHC

**Weight** 190g/m<sup>2</sup>

**Fabric** polycotton twill

**Description** open neck collar • 5 button closure • mitered chest pocket • two bottom pockets • bust darts • garment features top stitching and bar tacks at stress points • closed back, longer length garment

**Colours** KH N RB W

**Branding** Embroidery, Screen Print

HALF CHEST (CM)

SIZE	S	M	L	XL	2XL	3XL	4XL
CM	51,5	55,5	59,5	63,5	67,5	71,5	75,5





# TOPS |

Start off with the basics - from premium quality heavyweight T-Shirts and everyday Golf Shirts to formal Shirts and uniform staples, this selection covers all your daily Workwear essentials.



# PREMIUM QUALITY HEAVYWEIGHT T-SHIRTS



## UNISEX 180 T-SHIRT

SPAS-3432

Weight 180g/m<sup>2</sup>

Fabric 100% cotton, single jersey knit

Description short sleeve • ribbed crew neck

Colours BL BU DG2 L LB N O R W Y

Branding Digital Transfer, Embroidery, Screen Print

HALF CHEST (CM)

SIZE	S	M	L	XL	2XL	3XL	4XL	5XL
CM	50	53	56	59	62	65	68	71

TOPS





*We've got you covered*

 packaly





## MENS DAY2DAY GOLF SHIRT

SPLT-EVM

**Weight** 165g/m<sup>2</sup>

**Fabric** 100% polyester, piqué knit

**Description** easy-care fabric • knitted collar and cuffs  
• two button placket

**Colours** AQ BL GY L N O R RB W Y

**Branding** Digital Transfer, Embroidery, Screen Print

HALF CHEST (CM)

SIZE	S	M	L	XL	2XL	3XL	4XL	5XL
CM	53	56	59	62	65	68	71	74

## LADIES DAY2DAY GOLF SHIRT

SPLT-EVL

**Weight** 165g/m<sup>2</sup>

**Fabric** 100% polyester, piqué knit

**Description** easy-care fabric • knitted collar and cuffs  
• narrow two button placket • side slits

**Colours** AQ BL GY L N O R RB W Y

**Branding** Digital Transfer, Embroidery, Screen Print

HALF CHEST (CM)

SIZE	S	M	L	XL	2XL	3XL	4XL
CM	48	51	54	57	60	63	66

TOPS







## MENS BASIC GOLF SHIRT

SPLT-BBM

Weight 175g/m<sup>2</sup>

Fabric 65% polyester, 35% cotton, piqué knit

Description knitted two ridge collar • three button placket



Branding Digital Transfer, Embroidery, Screen Print

HALF CHEST (CM)

SIZE	XS	S	M	L	XL	2XL	3XL	4XL	5XL
CM	49.5	52	54.5	57	59.5	62	64.5	67	69.5

## LADIES BASIC GOLF SHIRT

SPLT-BBL

Weight 175g/m<sup>2</sup>

Fabric 65% polyester, 35% cotton, piqué knit

Description knitted two ridge collar • v-neck one button placket



Branding Digital Transfer, Embroidery, Screen Print

HALF CHEST (CM)

SIZE	XS	S	M	L	XL	2XL	3XL	4XL
CM	44	47	50	53	56	59	62	65



TOPS





### MENS SHORT SLEEVE KENT SHIRT

SPAS-7756

**Weight** 105g/m<sup>2</sup>

**Fabric** 65% polyester, 35% cotton poplin

**Description** tonal buttons • chest pocket • back yoke with knife pleats • curved hem

**Colours**

**Branding** Digital Transfer, Embroidery, Screen Print

HALF CHEST (CM)

SIZE	S	M	L	XL	2XL	3XL	4XL	5XL
CM	55	58	61	64	67	70	73	76

### LADIES SHORT SLEEVE KENT SHIRT

SPAS-7757

**Weight** 105g/m<sup>2</sup>

**Fabric** 65% polyester, 35% cotton poplin

**Description** tonal buttons • two chest pockets with button down flap • tab details on sleeve • front and back darts • back yoke • curved hem

**Colours**

**Branding** Digital Transfer, Embroidery, Screen Print

HALF CHEST (CM)

SIZE	S	M	L	XL	2XL	3XL	4XL
CM	48	51	54	57	60	63	66





TOPS

### MENS LONG SLEEVE KENT SHIRT

SPAS-7758

**Weight** 105g/m<sup>2</sup>

**Fabric** 65% polyester, 35% cotton poplin

**Description** tonal buttons • chest pocket • back yoke with knife pleats • adjustable two button cuff • curved hem

**Colours** BL GY LB N R RB W

**Branding** Digital Transfer, Embroidery, Screen Print

HALF CHEST (CM)

SIZE	S	M	L	XL	2XL	3XL	4XL	5XL
CM	55	58	61	64	67	70	73	76

### LADIES LONG SLEEVE KENT SHIRT

SPAS-7759

**Weight** 105g/m<sup>2</sup>

**Fabric** 65% polyester, 35% cotton poplin

**Description** tonal buttons • two chest pockets with button down flap • two button cuff • front and back darts • back yoke • curved hem

**Colours** BL GY LB N R RB W

**Branding** Digital Transfer, Embroidery, Screen Print

HALF CHEST (CM)

SIZE	S	M	L	XL	2XL	3XL	4XL
CM	48	51	54	57	60	63	66







TOPS



### MENS LONG SLEEVE HARDWOOD SHIRT

SPAS-11204

Weight 5.2oz

Fabric 100% cotton, cross hatch denim

Description two front pockets • back yoke with two knife pleats

Colours **BU**

Branding Digital Transfer, Embroidery, Screen Print

HALF CHEST (CM)

SIZE	S	M	L	XL	2XL	3XL	4XL	5XL
CM	55	58	61	64	67	70	73	76

### LADIES LONG SLEEVE HARDWOOD SHIRT

SPAS-11205

Weight 5.2oz

Fabric 100% cotton, cross hatch denim

Description two v-front pockets with button down flap • front darts • curved hem

Colours **BU**

Branding Digital Transfer, Embroidery, Screen Print

HALF CHEST (CM)

SIZE	S	M	L	XL	2XL	3XL	4XL
CM	48	51	54	57	60	63	66



### MENS SHORT SLEEVE WILDROCK SHIRT

SPAS-7760

Weight 150g/m<sup>2</sup>

Fabric 100% cotton twill

Description front and back yoke • two pleated chest pockets with button flap • metal buttons

Colours **BL** CAM KH MG N ST W

Branding Digital Transfer, Embroidery

HALF CHEST (CM)

SIZE	S	M	L	XL	2XL	3XL	4XL	5XL
CM	55	58	61	64	67	70	73	76

### MENS LONG SLEEVE WILDROCK SHIRT

SPAS-7762

Weight 150g/m<sup>2</sup>

Fabric 100% cotton twill

Description front and back yoke • two pleated chest pockets with button flap • metal buttons

Colours **BL** CAM KH MG N ST W

Branding Digital Transfer, Embroidery

HALF CHEST (CM)

SIZE	S	M	L	XL	2XL	3XL	4XL	5XL
CM	55	58	61	64	67	70	73	76





TOPS

### LADIES SHORT SLEEVE WILDROCK SHIRT

SPAS-7761

Weight 150g/m<sup>2</sup>

Fabric 100% cotton twill

Description two pleated chest pockets with button flap  
• metal buttons • back yoke • curved hem

Colours **BL** CAM KH MG N ST W

Branding Digital Transfer, Embroidery

HALF CHEST (CM)

SIZE	S	M	L	XL	2XL	3XL	4XL
CM	48	51	54	57	60	63	66

### LADIES LONG SLEEVE WILDROCK SHIRT

SPAS-7763

Weight 150g/m<sup>2</sup>

Fabric 100% cotton twill

Description two pleated chest pockets with button flap  
• metal buttons • back yoke • curved hem

Colours **BL** CAM KH MG N ST W

Branding Digital Transfer, Embroidery

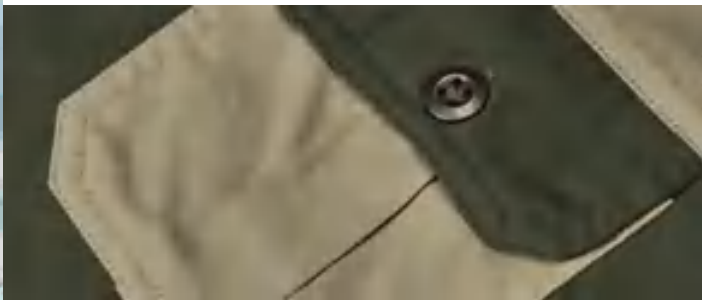
HALF CHEST (CM)

SIZE	S	M	L	XL	2XL	3XL	4XL
CM	48	51	54	57	60	63	66





**ENDURE THE  
ROUGH TERRAIN**



### MENS SHORT SLEEVE TWO-TONE BUSH SHIRT

SPLT-SGMS

Weight 160g/m<sup>2</sup>

Fabric 100% brushed cotton twill

Description box pleated pockets with button down flap • front and back contrast yoke • back yoke has a box pleat • metal buttons • twin needle finishing at seams for strength and durability

Colours   

Branding Digital Transfer, Embroidery, Screen Print

HALF CHEST (CM)

SIZE	S	M	L	XL	2XL	3XL	4XL	5XL
CM	52	56	60	64	68	72	76	80



# BOTTOMS

With several styles and fabrics available, this selection was designed with form, fit and functionality in mind.







BOTTOMS



## MENS CARGO SHORTS

SPLT-HLD

Weight 245g/m<sup>2</sup>

Fabric 65% polyester, 35% cotton, brushed twill

Description slanted side pockets • billow cargo side pockets • two back pockets with button down flap

Colours **BL** KH ST

Branding n/a

HALF WAIST (CM)

SIZE	28	30	32	34	36	38	40	42	44	46
CM	37	39.5	42	44.5	47	49.5	52	54.5	57	59.5



### MENS CARGO PANTS

SPLT-GCG

Weight 245g/m<sup>2</sup>

Fabric 65% polyester, 35% cotton, sanded twill

Description side cargo pockets • back pockets with button down flap • slanted side pockets • self-fabric belt loops • back darts

Colours **BL** **NT** **ST**

Branding n/a

HALF WAIST (CM)

SIZE	30	32	34	36	38	40	42	44
CM	39.5	42	44.5	47	49.5	52	54.5	57





## LADIES CARGO PANTS

SPLT-LCG

Weight 180g/m<sup>2</sup>

Fabric 100% cotton, brushed twill

Description side cargo pockets • back pockets with button down flap  
• slanted side pockets • self-fabric belt loops • back darts

Colours **BL** **NT** **ST**

Branding n/a

HALF WAIST (CM)

SIZE	28	30	32	34	36	38	40	42	44
CM	34	36.5	39	41.5	44	46.5	49	51.5	54



BOTTOMS



### MENS CARGO ZIP-OFF PANTS

SPLT-ZIP

Weight 245g/m<sup>2</sup>

Fabric 65% polyester, 35% cotton, sanded twill

Description cargo pockets • side entry pockets • back pockets with button down flap • buttons on all pockets are concealed • half leg bermuda zip-off • inner drawstring

Colours **BL** **BN** **KH** **ST**

Branding n/a

HALF WAIST (CM)

SIZE	30	32	34	36	38	40	42	44
CM	39.5	42	44.5	47	49.5	52	54.5	57



BOTTOMS



**BOSS PREMIUM CARGO REFLECTIVE PANTS**

SPLT-1121

Weight 240g/m<sup>2</sup>

Fabric 100% J54 cotton twill

Description YKK zip • self-fabric waist with seven belt loops  
 • cargo pockets with velcro closure flap • side entry front pockets • back pockets with velcro closure flap  
 • back darts • silver 50mm reflective tape detail  
 • top stitching detail • bar tacks at stress points

Colours **N**

Branding n/a

WAIST (CM)

SIZE	28	30	32	34	36	38	40	42	44	46	48	50	52
CM	72	77	82	87	92	97	102	107	112	117	122	127	132





**PREMIUM 100% COTTON  
DENIM CONTI PANTS**

Fabric 100% cotton, 12oz denim

Description  
 • elasticated back waist • five belt loops  
 • two slanted front pockets • back pocket  
 • contrast triple needle top stitching  
 • bar tacks at stress points

Colours **BU**

Branding n/a

HALF WAIST STRETCHED (CM)

SIZE	28	30	32	34	36	38	40	42	44	46	48	50	52
CM	36,8	39,1	41,4	43,7	46	48,3	50,6	52,9	55,2	57,5	59,8	62,1	64,5



SPLT-1117-BU



**REFLECTIVE LEGS**

**YELLOW TAPE**

yellow/silver 50mm  
reflective tape detail on legs

SPLT-11171-BU



**ORANGE TAPE**

orange/silver 50mm  
reflective tape detail on legs

SPLT-11172-BU





## MENS DENIM JEANS

SPLT-MDM

**Fabric** 100% cotton, 12.5oz denim

**Description** five pocket basic denim • embroidered back pocket detail • metal rivets for extra durability

**Colours** **BL** **BU**

**Branding** n/a

HALF WAIST (CM)

SIZE	28	30	32	34	36	38	40	42	44
CM	37	39.5	42	44.5	47	49.5	52	54.5	57



## MENS NAVY JEANS

SPAS-7774

**Fabric** 100% cotton, 11oz denim

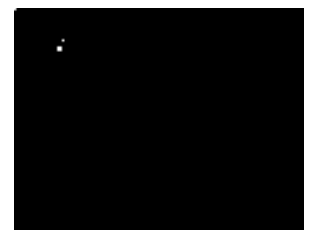
**Description** five pocket jean with rivets for extra durability • YKK zip • contrast stitching

**Colours** **N**

**Branding** n/a

HALF WAIST (CM)

SIZE	28	30	32	34	36	38	40	42	44	46	48
CM	36	38.5	41	43.5	46	48.5	51	53.5	56	58.5	61



BOTTOMS



# HEADWEAR

Whether you operate in extreme hot or cold conditions, top it off with our excellent selection of Headwear.



### PRO BASE CAP

SPLT-PBP

Weight 255g/m<sup>2</sup>

Fabric 100% heavy brushed cotton

Description 6 panel structured peak • 6 rows of stitching  
• 6 embroidered eyelets • self-fabric velcro closure

Colours BL BU DG GY L LB N O P PI  
R TQ W Y

Branding Digital Transfer, Embroidery



HEADWEAR



### BEANIE

SPAP-1030

Fabric 100% acrylic

Description acrylic rib knit

Colours BL GY N R

Branding Embroidery



### SIGN HI-VIZ REFLECTIVE CAP

SPLT-2000



**Fabric** 100% polyester



**Description** 6 panel structured peak • 6 rows of stitching • 6 embroidered contrast eyelets • silver reflective binding detail • self-fabric velcro closure



**Colours** Y O

**Branding** Embroidery, Screen Print



### BREAKDOWN HI-VIZ REFLECTIVE HAT



SPLT-2001



**Fabric** 100% polyester



**Description** unstructured • contrast cord with adjustable toggle • silver reflective binding detail

**Colours** Y O

**Branding** Screen Print





**BESEEN HI-VIZ BEANIE**



SPLT-2002

Fabric 100% acrylic

Description acrylic rib knit

Colours Y O

Branding Embroidery



**CAUTION HI-VIZ REFLECTIVE BUFF**



SPLT-2003

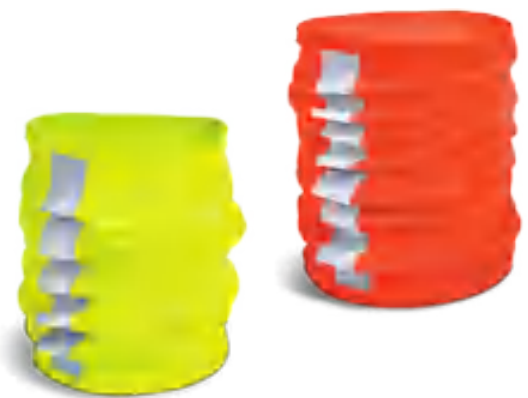
Fabric 100% polyester



Description silver reflective heat-pressed tape detail

Colours Y O

Branding Screen Print





### WILD BUSH HAT

SPLT-CCK

Weight 175g/m<sup>2</sup>

Fabric 100% cotton twill

Description unstructured • metal eyelets • brass studs • self-fabric cord

Colours BL DG1 N NT

Branding Digital Transfer, Embroidery



HEADWEAR



### BUNDU BUSH HAT

SPLT-WIL

Weight 160g/m<sup>2</sup>

Fabric 100% cotton twill

Description unstructured • metal eyelets • brass studs • self-fabric cord

Colours CAM

Branding Digital Transfer, Embroidery



### BUNDU CAP

SPLT-WLD

Weight 160g/m<sup>2</sup>

Fabric 100% cotton twill

Description 6 panel structured peak • 6 rows of stitching • 6 embroidered eyelets • self-fabric velcro closure

Colours CAM

Branding Digital Transfer, Embroidery

